



**CAP 232**

**MS -**

**Instructions manual - pictures  
Montageanleitung - Zeichnungen  
Montážní návod - obrázky**

Co potřebujete / What do you need / Sie werden brauchen



Nů ky  
Shear  
Scher



Nů  
Knife  
Messer



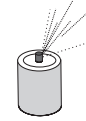
Lepidlo řídké  
CA Glue Thin  
Licht Kleber



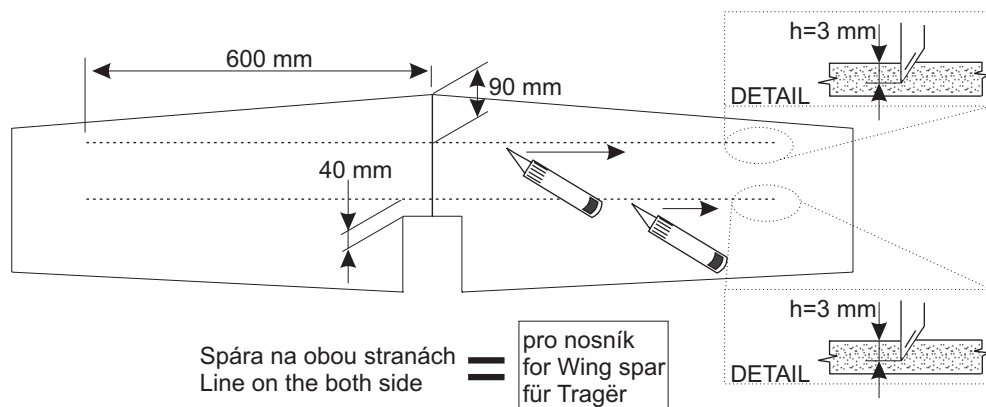
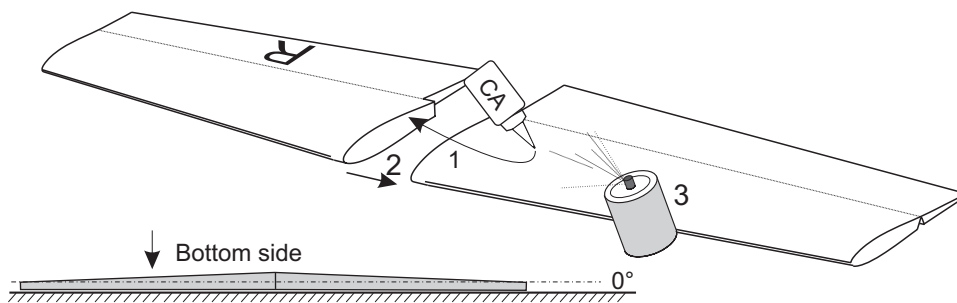
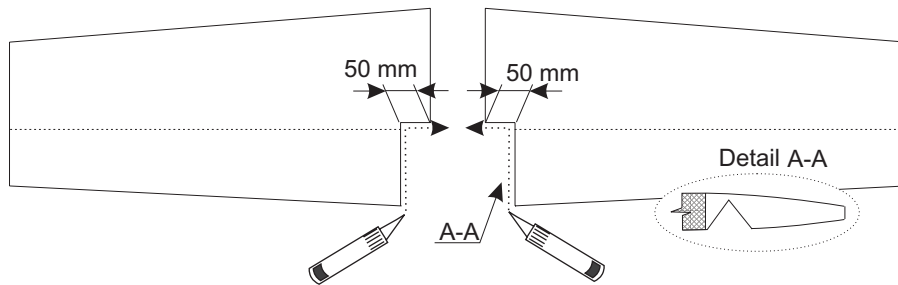
3M páska  
3M Tape  
3M Tape

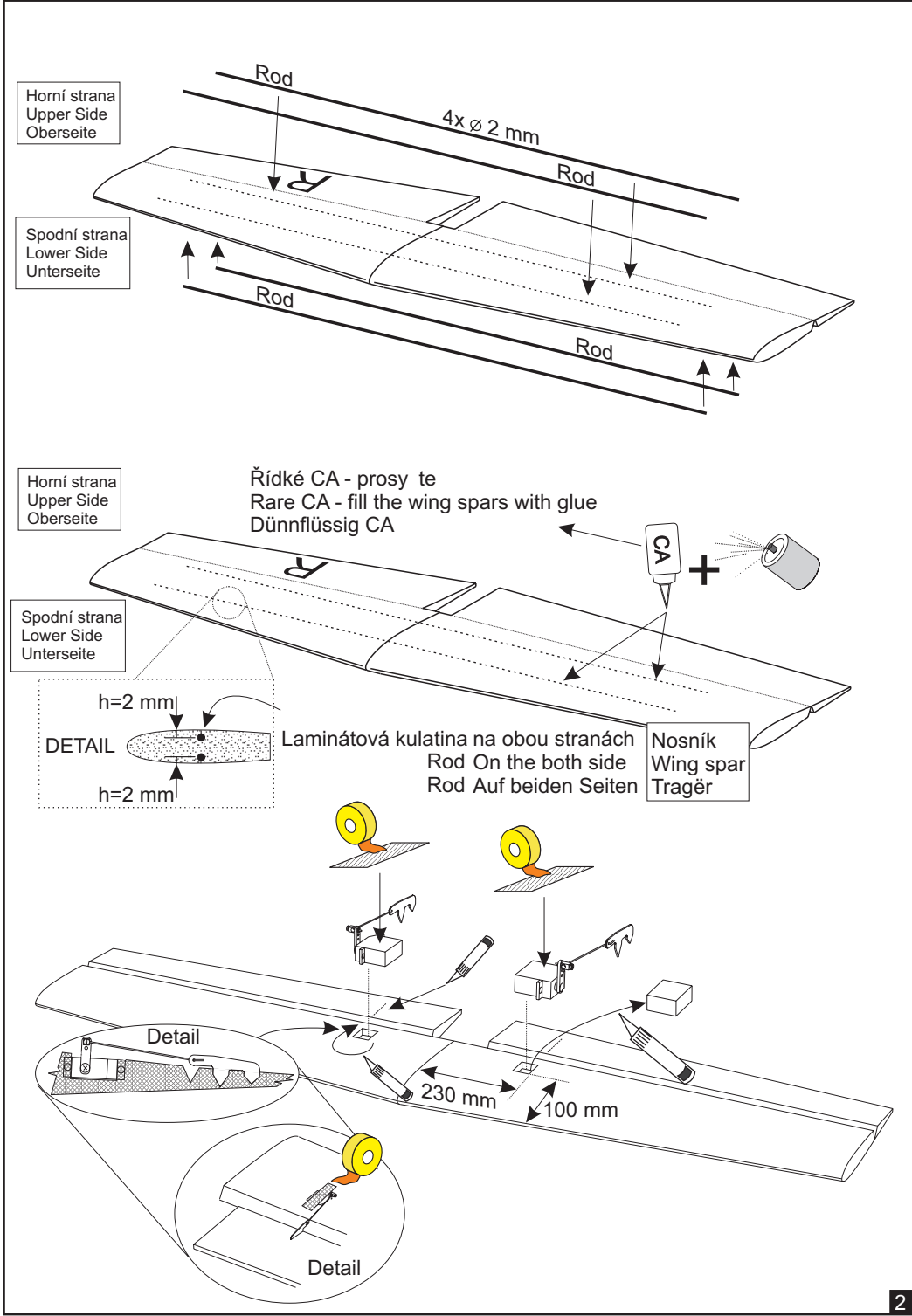


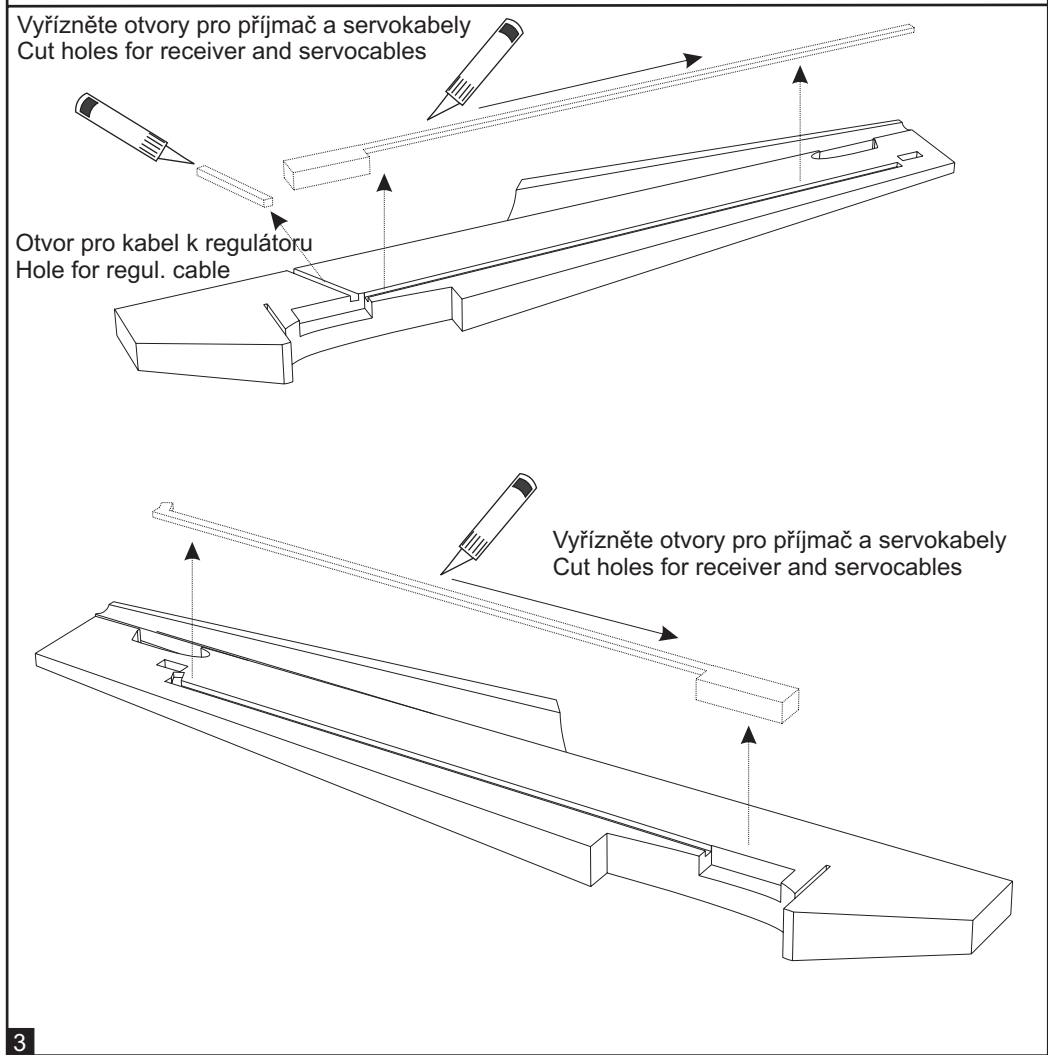
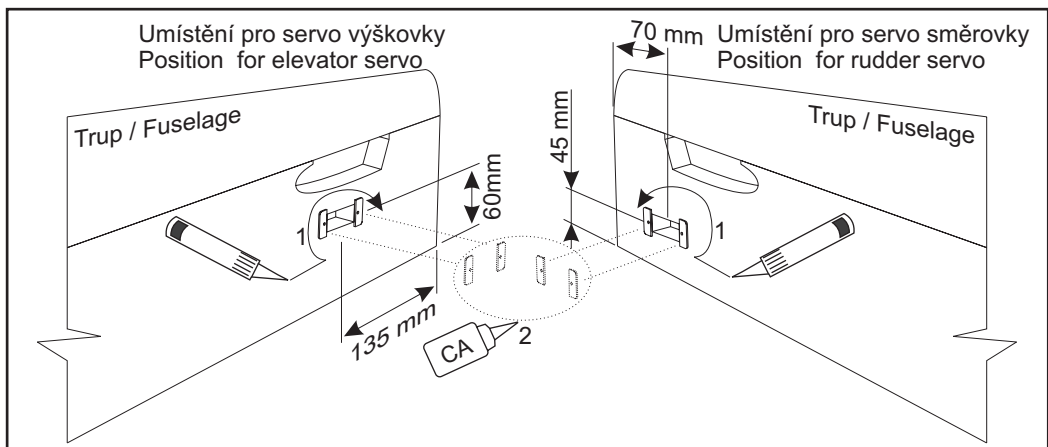
Plochý šroubovák  
Screwdriver  
Schlitzschraubendreher



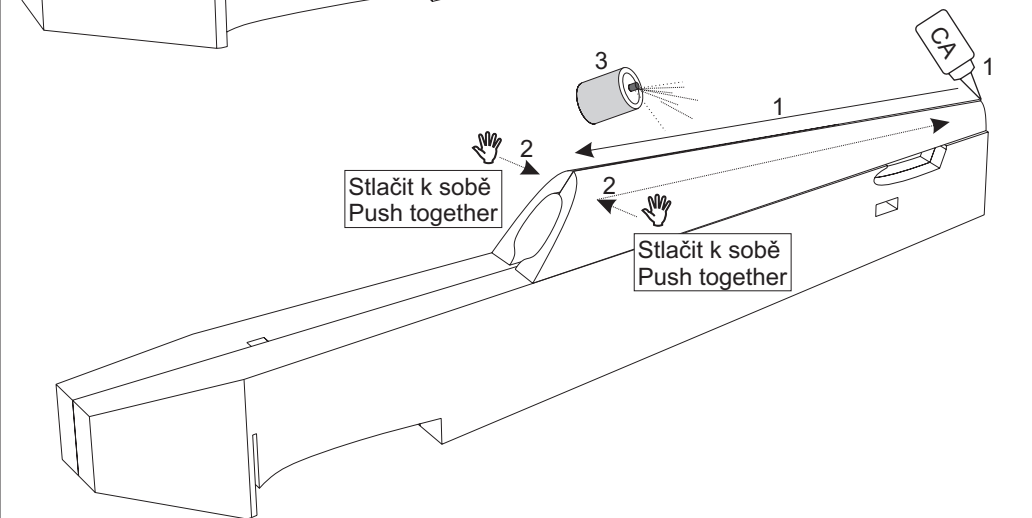
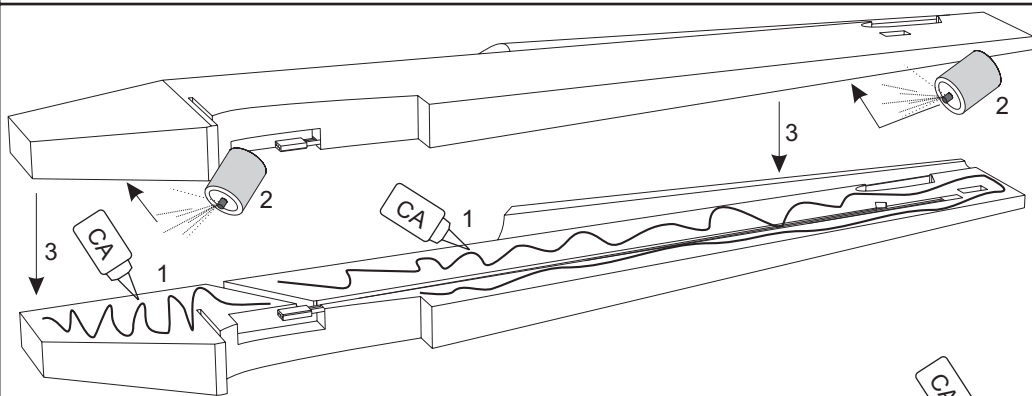
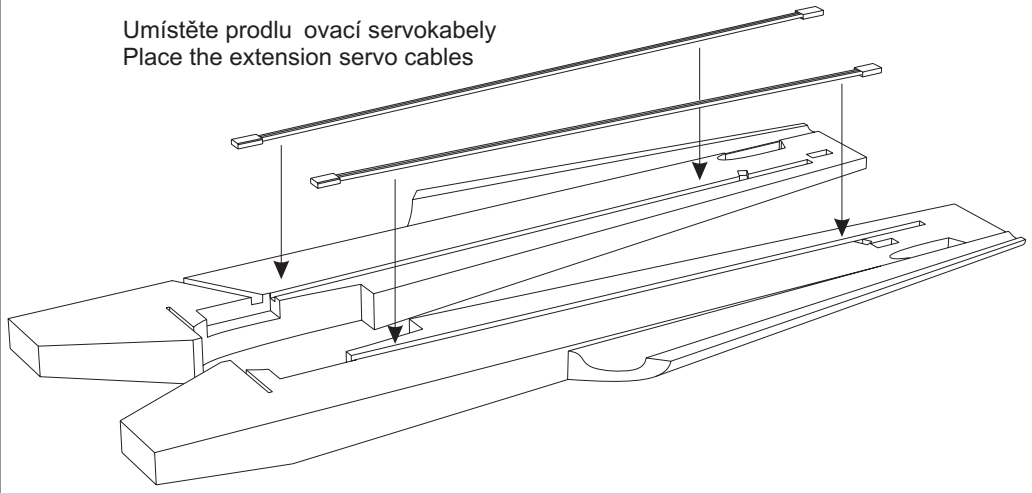
CA Aktivátor  
CA Activator  
Kleber Aktivator

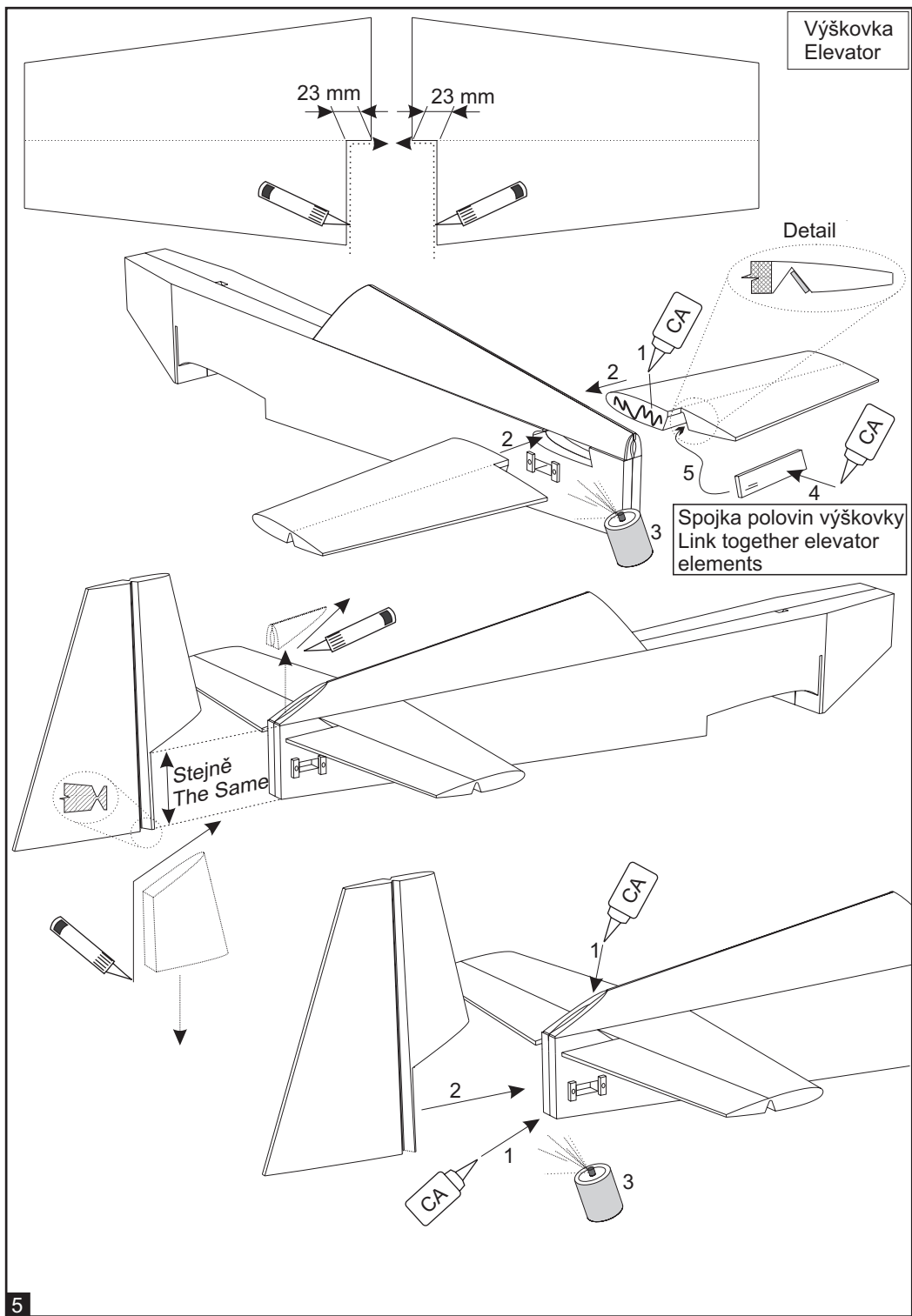




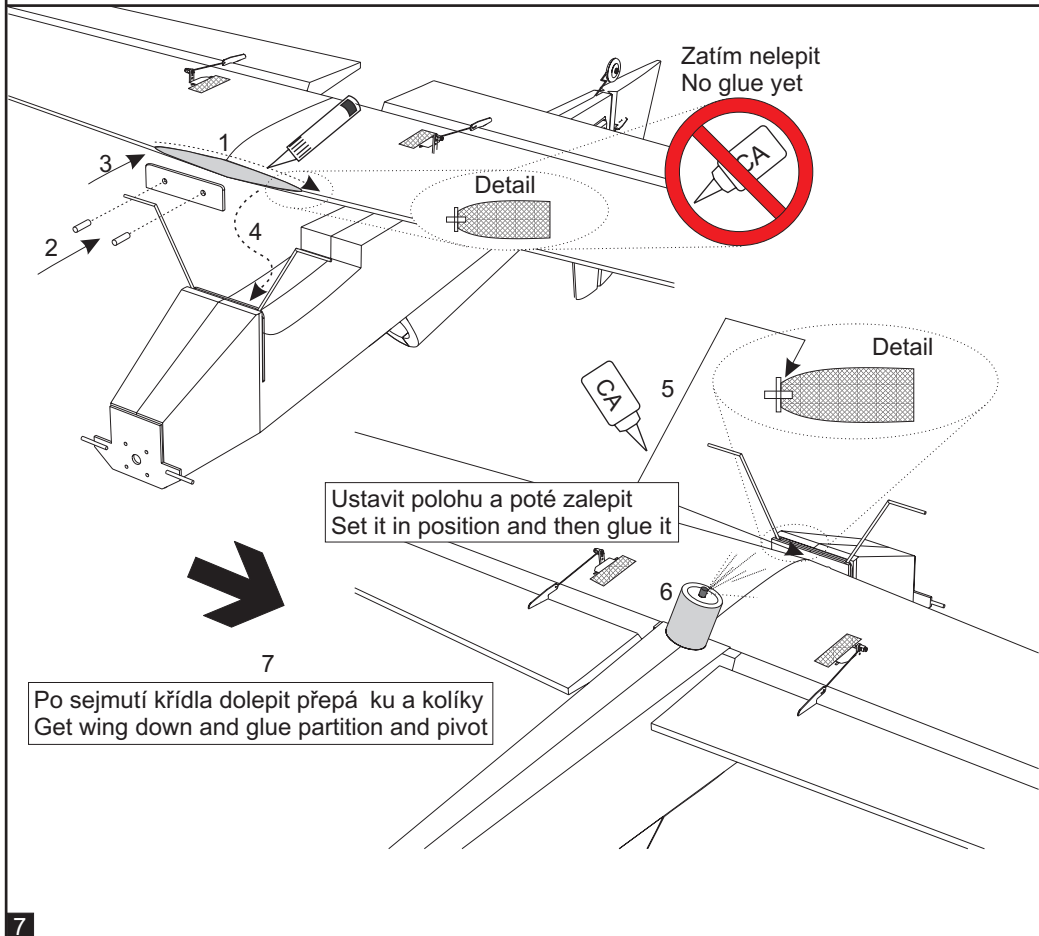
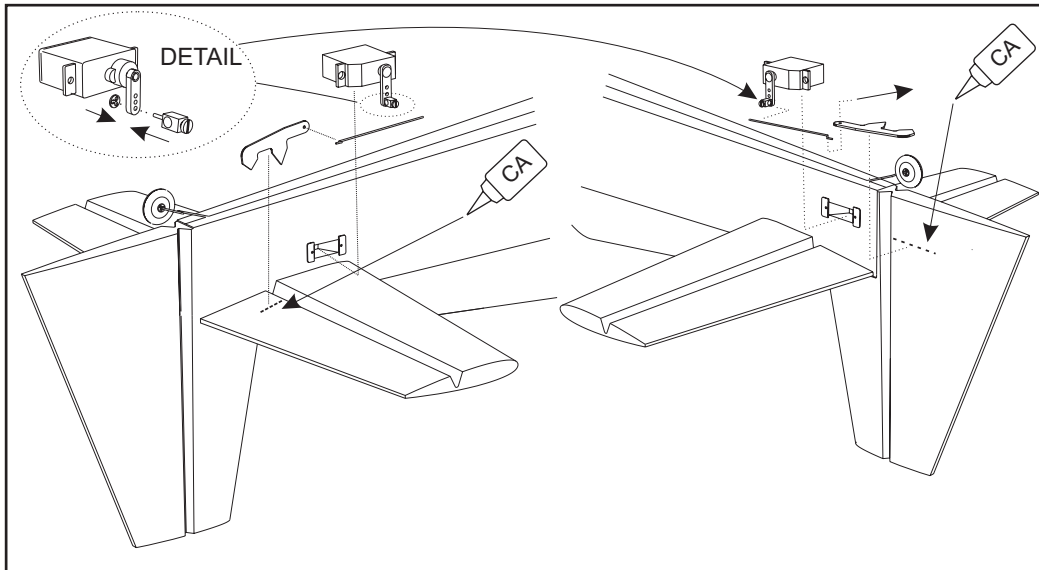


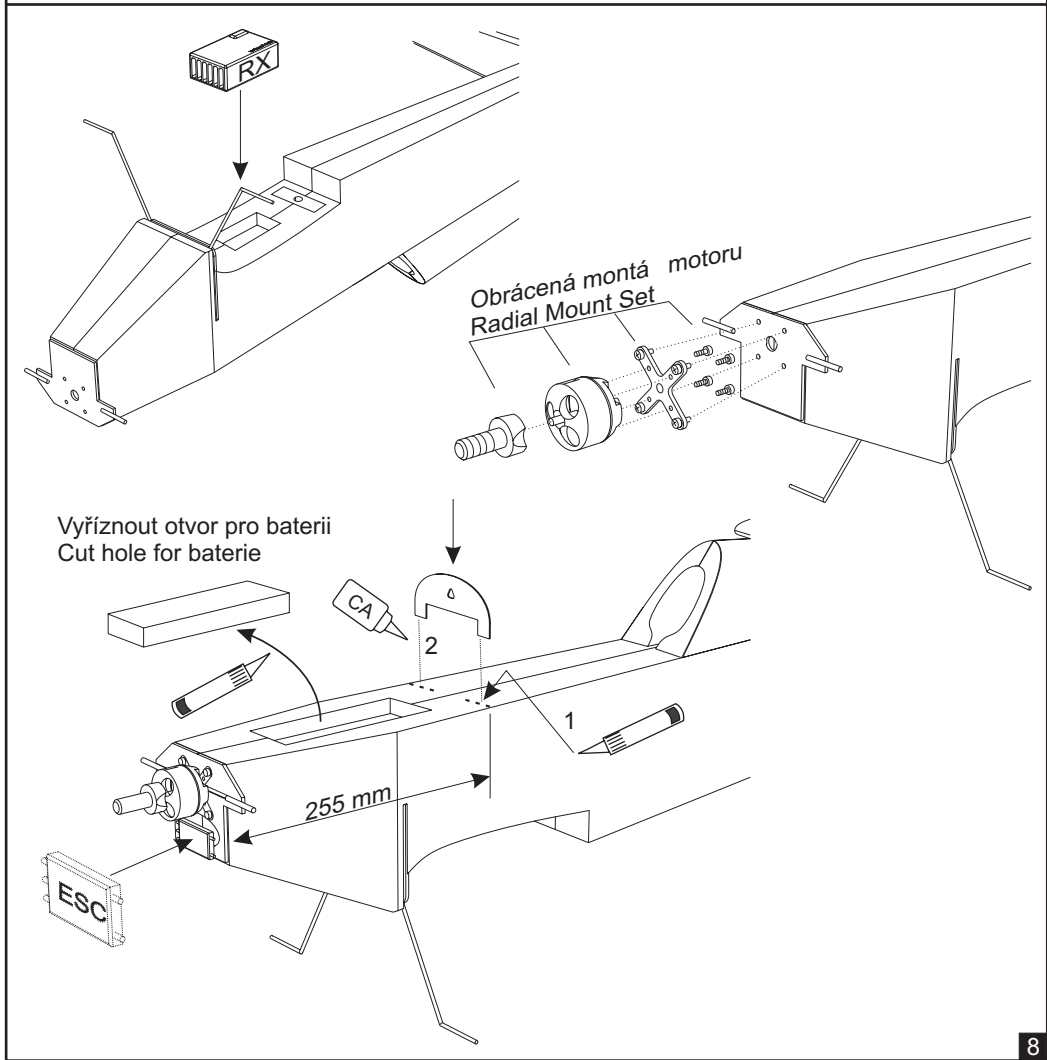
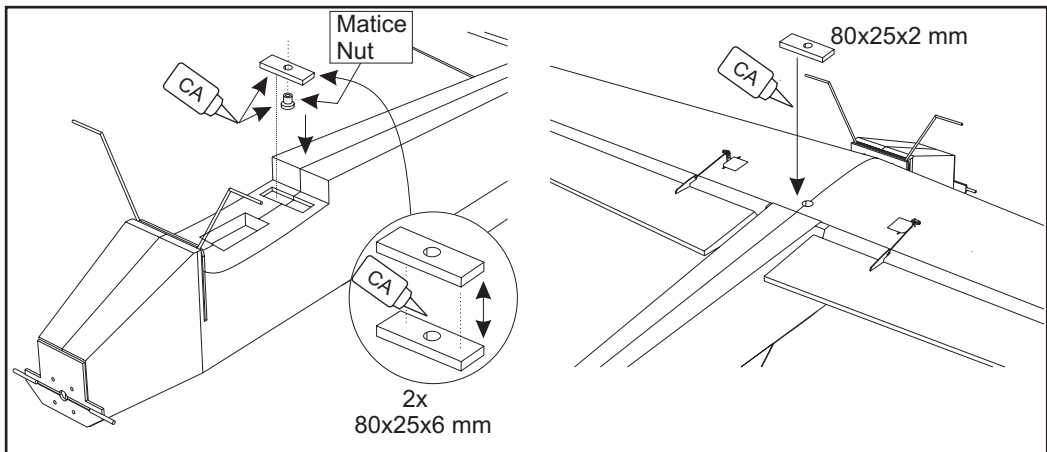
Umístěte prodlu ovací servokabely  
Place the extension servo cables

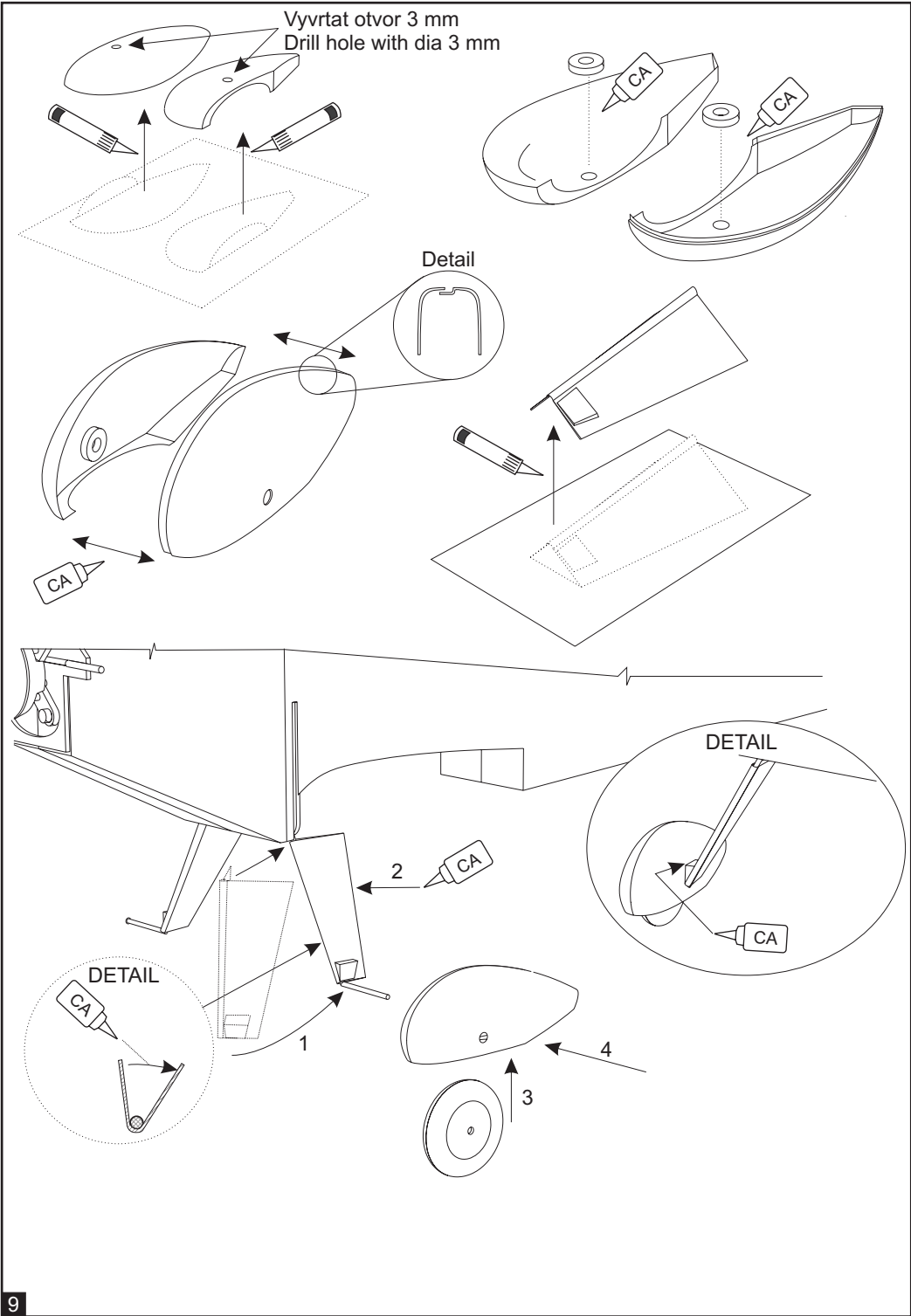


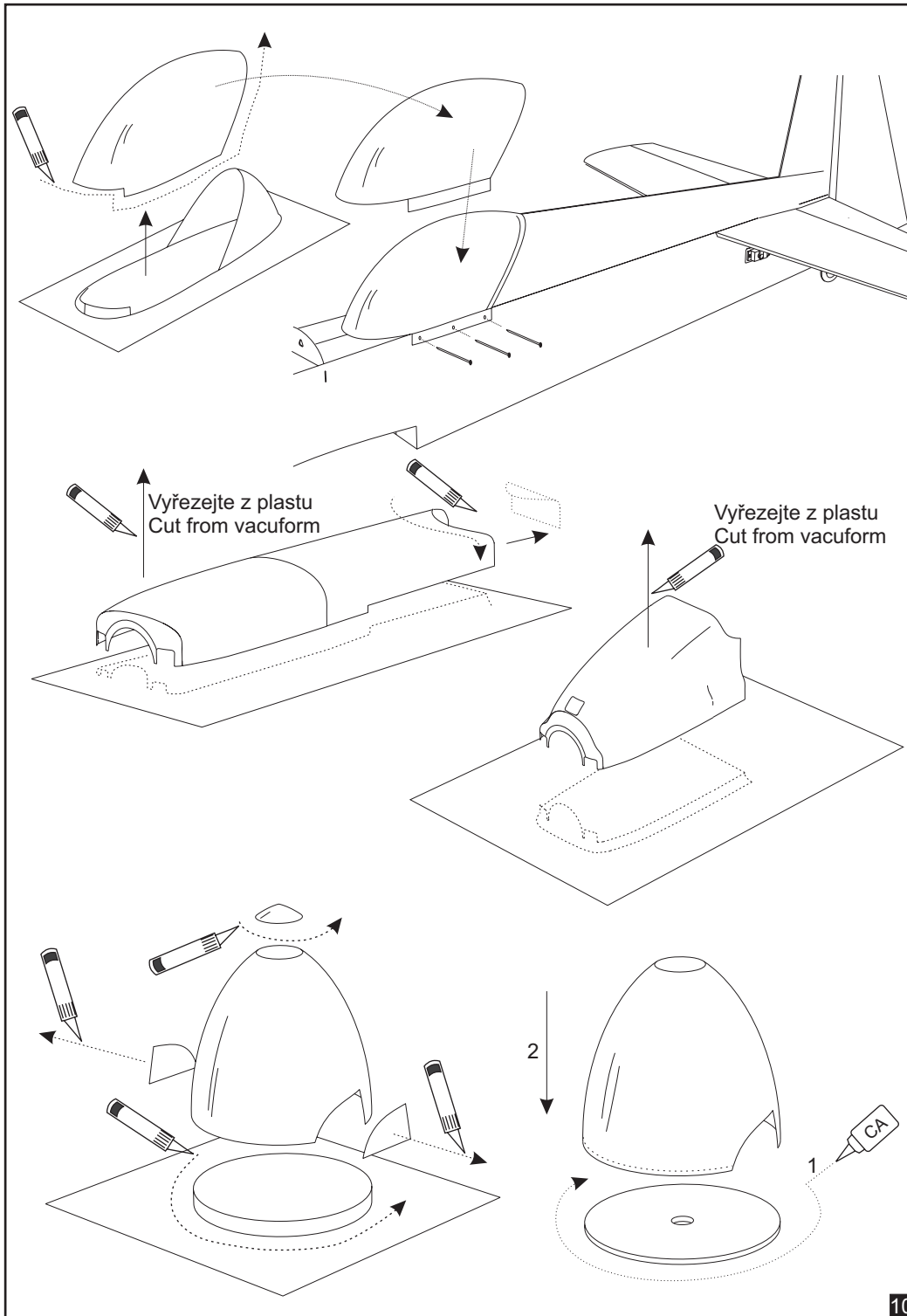


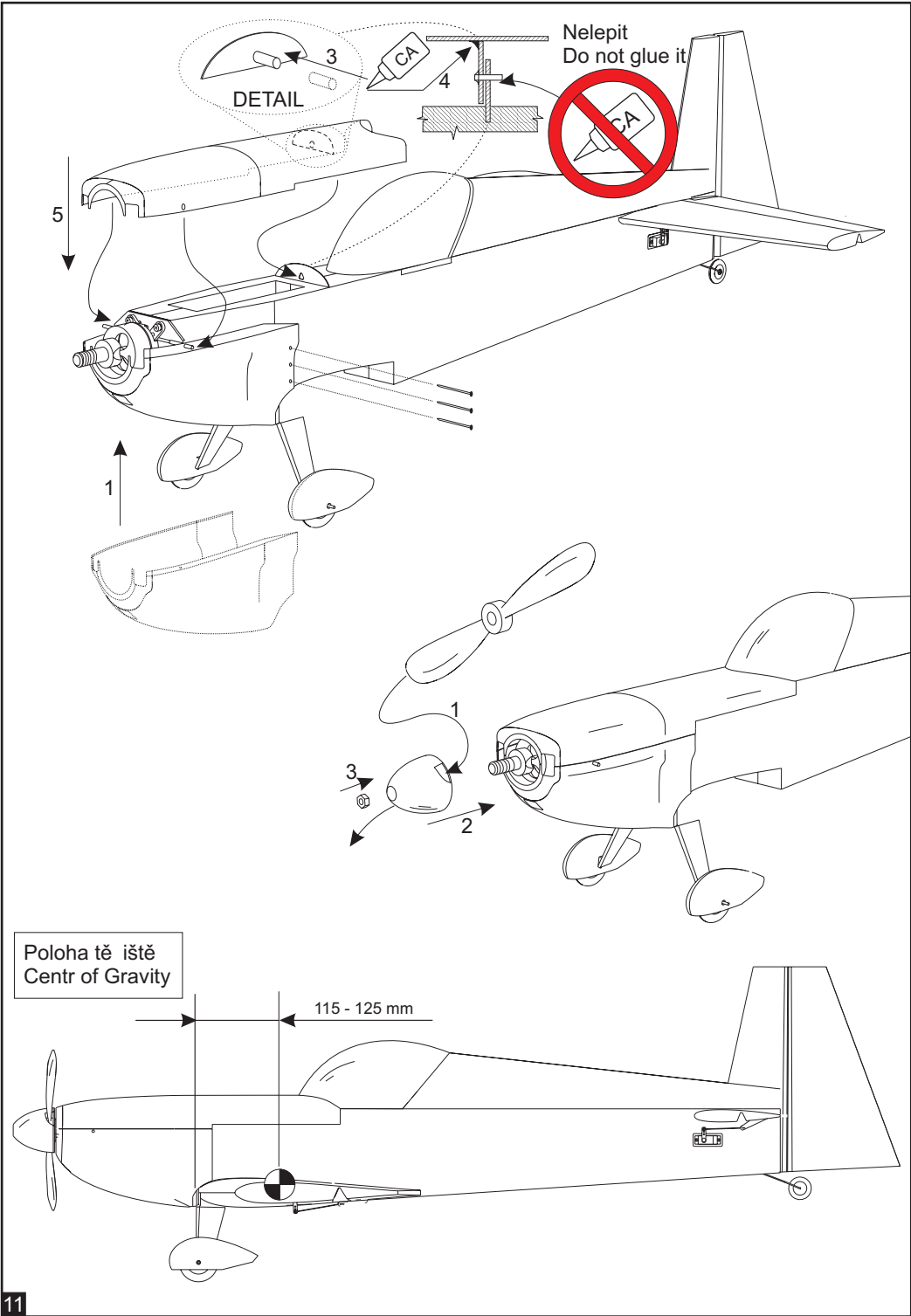






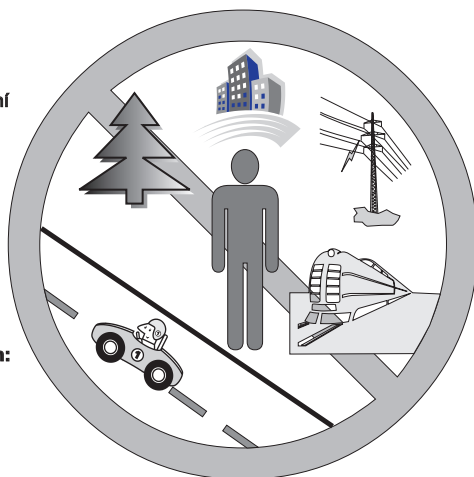






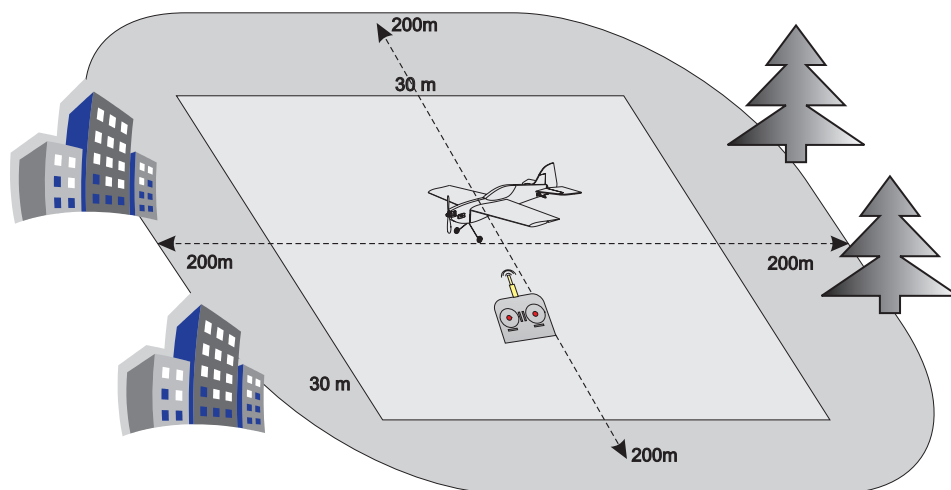
## Upozornění - Caution - Achtung

**Nikdy nelézte blízko:**  
Lidí a zvířat  
Staveb a obydlí  
Silnic, dálnic a železnic  
Vysokonapětových vedení



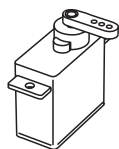
**Do not fly airplane near:**  
People or animals  
Buildings  
Roads or railway tracks  
Power lines

**Niemals in der Nähe von:**  
Menschen oder Tiere  
Gebäude  
Straßen und Eisenbahn  
Überlandleitungen



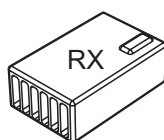
Doporučené příslušenství / Recommended Accessories

4x

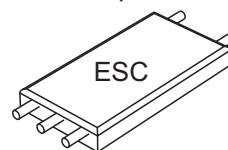


HS-85

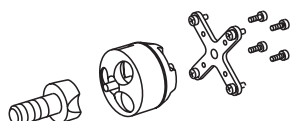
6 - ch



3 phase



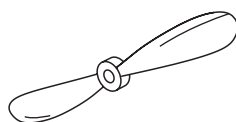
JETI Advance 70



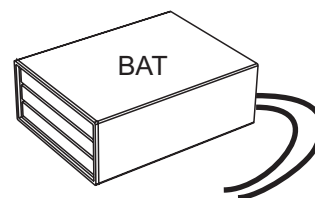
AXI 2820 / 12

+

Obrácená montáž motoru  
Radial Mount Set



APC 14 / 4 E



3s Li-Pol 3200 - 4400 mAh

Parametry / Parameters

Rozpětí / Wingspan / Spannweite : **1620 mm**  
Délka / Length / Länge : **1360mm**  
Hmotnost / Weight / Gewicht : **1400g...1700g**

Nastavení výchylek / Set-Up

	Standard	3D
Výškovka / Elevator	+ - 30 °	+ - 45 °
Křídélka / Ailerons	+ - 30 °	+ - 40 °
Směrovka / Rudder	+ - 30 °	+ - 40 °